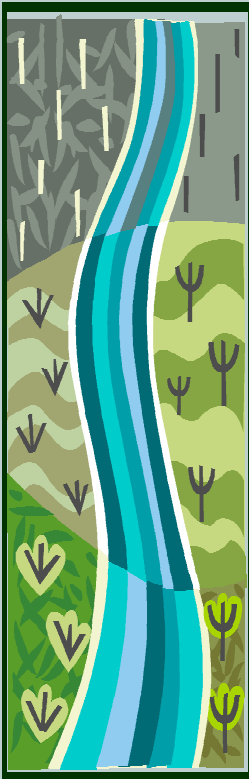


Reflections from Ron



INSIDE THIS ISSUE:

Reflections from 1
your DS

Mates in Ministry 2-3
Retreat, Scholar-
ships available

Computers for 3
Local Churches

Project Revolu- 4-5
tion Reg. Form

District Calendar 6-7
Continuing Ed.

Clergy B-days, 7
Prayer Calendar

Other Opportu- 8
nities for Growth

Hello colleagues and friends

There's a story told about a farmer. One day in summer he sat in front of his old shack, smoking his corncob pipe. Along came a stranger who asked, "How's your cotton coming?"

"Ain't got none," was the reply. "Didn't plant none. 'Fraid of the Boll weevil."

"Well, how's your corn?"

"Didn't plant none. 'Fraid o' drought."

"How about your potatoes?"

"Ain't got none. Scairt o' tater bugs."

The stranger finally asked, "Well, what did you plant?"

"Nothin'," the old farmer answered. "I just played it safe."

In this relationship we have with Jesus Christ, many of us play it safe. We have (*as the song says*) a story to tell to the nations. Yet we seem to take the same position as our old farmer friend. We're playing it safe. Like the old farmer, we're not cultivating much.

In agriculture, **cultivation** is the process of growing plants (specifically crops) on arable land. Cultivation usually begins with sowing of the seeds in the appropriate season. In the process of cultivation a farmer may be required to till the land, control weeds, and ultimately harvest the crops. And yet, what we sometimes miss by playing it safe is obviously clear to anyone who hears the story. Failure to thoroughly cultivate the land means that there will be no crop at the time of harvest – no fruit to bear. There will be no feast on the fall table. There will be nothing to sustain us through the lean times of winter in our lives.

Maybe there's something to the mission of our district when we talk about **cultivating Christian growth**. If we approach it faithfully, '**cultivating Christian growth** might well begin with tilling, or breaking up the soil of our hearts, to prepare them to receive the word of God. Then we can faithfully attend church, Sunday school, Bible studies and other Christian training events where we can receive God's Holy Word. We might consider using some weed control, or getting rid of those things in our lives that will prevent us from knowing Christ more intimately. (*This weeding season for Christians usually this occurs during the season of Lent where we give up chocolate, bread or sweets. I have found it much better giving up something that actually keeps me from closeness to God, like hatred, bitterness, or grudge-bearing, etc.*)

If we are faithful, the unlike the old farmer, we can look forward to a ripe and bountiful harvest, bearing fruit in the name and Spirit of our Lord and Savior Jesus Christ.

Agape and Shalom

Ron

**MATES IN MINISTRY RETREAT
OCTOBER 10-12, 2008**

CAMP Horizon

Planning is beginning by your Retreat chairs

Feel free to contact with ideas:

[Sherri Ewertt](#) or [Jan Hathaway](#)

What to bring...

Get your sleeping gear (sleeping bag or sheets/quilt & pillow), towels, pack your suitcase full of casual clothes (who knows what the weather will be, but bring clothes appropriate for weather and don't forget a jacket), Bible, flashlight (for that night stroll around the camp), snacks (we have never had too little, so bring your favorite), bring some money for our Outreach offering, books to share or exchange (both children and adults, isn't a child's book wonderful to read), table games for during the relax time, your favorite craft and something to write on and write with. Doesn't sound too bad to gather up. Now contact a few other MIM spouses or spouses from other denominations to make a car load. That sounds like fun.

Arrive Friday evening when you can. Registration begins at 5:00pm (if you want to come earlier that would be fine also) If you don't eat before you arrive bring a sack lunch, because there is no meal that evening. Gathering will be at 7:00pm. Bertha and Alma (they were at Annual Meeting back in May) will join us at this time to greet us and give us words of wisdom. Then Jan Hathaway will have games to reacquaint us.

Optional items

Please bring **50 or so of your address labels** and it would be nice if they had your email and telephone/cell number on them. This is not required but would save a lot of writing for you at retreat.

Scholarships Available

The Kansas East clergy spouses voted at their 2008 annual conference gathering to make **scholarships available for interested KEC spouses** to attend the fall Mates in Ministry retreat which is currently being planned by the Kansas West clergy spouses. Yours truly was given the responsibility of sending notice to spouses. The retreat will be October 10-12, 2008, at Camp Horizon (30811 Horizon Dr, Arkansas City, KS; southeast of Arkansas City about five miles). More specific information can be accessed at www.mates-in-ministry.com/.

Application for Mates in Ministry Retreat funding from Kansas East Conference Clergy Spouses

Request Date:

Name:

Address:

City: State: Zip Code:

Home Phone: Cell:

Email:

Requested Amount:

(Total funding fee available per person is \$85.)

The request amount will be paid directly to Mates in Ministry through the Conference Office. Questions? Call Kay Inman toll free: 1-877-972-9111.

Send applications to: Kansas East Conference Office
Attn: Clergy Spouse Group Treasurer
PO Box 4187
Topeka, KS 66604-0187

Free Computers and Printers Available for Local Churches

Church of the Resurrection 913-897-0120

Coordinator: Rick Estrin

Phone: 913-685-1008 home, 816-591-0465 cell

E-mail: restrin@lucent.com

Donations are always taken as well. Drop them off at the main Narthex and pick-up a tax receipt at the East bldg. Make sure you call ahead to assure someone is there.

Project Revolution!

MORE THAN A NAME

WELCOME all district youth! (grades 7-12)

Cost: \$10

Youth Rally Begins Sat, September 13th at 4 p.m.

Ends Sun, September 14th at 9:15 a.m.

Worden United Methodist Church—Baldwin, KS

Directions: West At HWY 59 & 56; SE corner of 900 Rd. & 56 HWY (3miles)



Rock Out with Article One

CD's and T-shirts will be available after concert

?Questions? Contact our District Coordinators:

Matt Stuckey mattydmaster@gmail.com 620-228-2947

Tami Clark tami@fumclawrence.org 785-841-7500

Items to Bring:

- Health Waiver (www.kansaseast.org)
- Sleeping bag & pillow
- Clothes for Worship Service at 8:15 a.m. (Sunday)
- Snacks to share
- Money for Youth Service Fund (donation)
- Flashlight
- Camera (optional)
- Friends and Lots of enthusiasm!

sponsored by Five Rivers District Council On Youth Ministries, UMC

Project Revolution!

MORE THAN A NAME

District YOUTH Event for grades 7—12

Begins Sat, September 13th at 4 p.m.

Ends Sun, September 14th at 9:15 a.m.

Worden UMC—294 E. 900 Road (6 miles West of Baldwin, KS)

Cost: \$10

Send Registration and Payment by Thursday, September 4th to:

Five Rivers District Office, PO Box 565, Baldwin City, KS 66006

* one adult must accompany each group of 1 to 6 youth

Registration Form

Name: _____ Date: _____

Grade: 7 8 9 10 11 12 Adult

Phone # _____ Cell # _____

Address: _____

City: _____ Zip: _____

E-Mail: _____

Home Church: _____

Region: _____

Shirt Size (Adult): Male Cut: S M L XL 2L 3X

Female cut: S M L XL 2L 3X

Diet Restrictions: _____

Parents Name: _____ Cell # _____

Emergency Contact: _____ # _____

sponsored by Five Rivers District Council On Youth Ministries, UMC

September 2008

Sun	Mon	Tue	Wed	Thu	Fri	Sat
	1	2	3	4	5	6
7	8	9	10	11	12	13
14	15	16	17	18	19	20
21	22	23	24	25	26	27
28	29	30				

September District Calendar

Sept.

- 3 Rev. King District Superintendent is back from vacation
 8-11 Marvé Administrative Assistant on vacation (home the 13th)
 8 Incubator meeting at Ottawa 1st in the Parlor 8:30 a.m.-4:00 p.m.
 9-10 Extended Cabinet Consults
 13 KEC UMW Annual Meeting at Eudora UMC
 13 Conference on General Discipleship
 13-14 **Youth Rally at Worden UMC**
 15-18 DS and Extended Cabinet Consultations at the Spiritual Life Center in Wichita
 20 District UMW Meeting Wellsville UMC, Rev. Julienne Judd is the guest speaker
 20 Basic Disaster Training 9:00 a.m.—3:00 p.m. kseastvim@yahoo.com
 22 **Five Rivers District Clergy Meeting at Ottawa 1st**
 22-24 DS and Extended Cabinet Consults
 25 **5R Leadership Team Meeting 7:00 p.m. at Ottawa 1st**
 27 Camp Chippewa celebrates 150 years
 29 District Committee on Ministry 9:00 a.m.– 4:30 p.m. (Wellsville)
 30 Extended Cabinet Crisis Training, District Office closed in afternoon for travel time

October

- 1 District Office closed for Crisis Training in Wichita
 2-3 Leadership Institute 2008, Leawood Church of the Resurrection UMC
 13720 Roe Blvd., Leawood, KS
 6 KEC Information and registration for Humana Insurance, 9a.m. 12 noon actives
 1 p.m.– 4:00 p.m. retired.
 10-12 Mates in Ministry Retreat (see information on pages 2-3)

Continuing Education Opportunities

Basic Disaster Training

September 20, 2008

9:00 a.m.–3:00 p.m.

Topeka Countryside UMC

3221 SW Burlingame Rd.

Topeka, KS

Coordinator Julie Pohl contact at kseastvim@yahoo.com or 785-989-3237

Leadership Institute 2008

October 2-3rd

Leawood Church of the Resurrection UMC

13720 Roe Blvd.

Leawood, KS

Now in its 10th year, the Leadership Institute is a powerful source of creative ideas, hope, and renewal for mainline church leaders from around the country

Institute participants will hear leadership defined in all-new General Sessions on “Ten Great Ideas and Ten Leadership Principles” by Resurrection’s Senior Pastor, Reverend Adam Hamilton, and in a special session with Jim Wallis, Chief Executive Officer at Sojourners and a bestselling author, public theologian, speaker, preacher, and commentator on religion in public life, faith and politics.

In addition, participants can choose from more than 80 workshops about specific areas of church life

For more information about the speakers, workshops, events, transportation and lodging and to see the schedule and download a registration form, go to <http://www.cor.org/catalyst/leadership-institute/>

Clergy September Birthdays

John Sheehan	9/02
Jerrald Harnden	9/05
Gary Merritt	5/09
Janet Justice	9/17
Connie Wilson	9/22
Michael McKee	9/27

District Prayer Calendar

Sept. 7	Richmond Rev. Jerrald Harnden
Sept. 14	Plum Creek Rev. Beth Hodgson
Sept. 21	Elsmore-Mildred Pastor Connie Cox
Sept. 28	Pomona-Vassar Pastor Kathleen Symes

Five Rivers District Office

The United Methodist Church

809 Seventh, #1

P.O. Box 565

Baldwin City, KS 66006-0565

Phone: 785-594-4804

Fax: 785-594-4820

E-mail: fiverivers@embarqmail.com

Ds E-mail: 5riversds@embarqmail.com

Kansas Bishop: Dr. Rev. Scott Jones
District Superintendent: Rev. Ronald King
Administrative Assistant, Newsletter editor
Marvé Ralston

Mission Statement: Cultivate Christian Growth

Safe and Sacred Training Offered in September

Safe and Sacred Instructor Training

New materials (DVD and notebooks) plus training will be offered on September 6th from 12:00 noon to 5:00 p.m. This will be held at the Church of the Resurrection at 13720 Roe, (137th) in Leawood. There will be one DVD per district given out at this time to be shared when needed by trainers. Call or e-mail Nancy Brown 913-897-3121 or nancybrownkor@aol.com with questions.

Interim Minister Training Seminar

*Mid Year appointment openings are a fact of life.
Consider using a trained Intentional Interim Pastor.*

The South Central Jurisdiction College of Bishops, in conjunction with The Intentional Growth Center, is pleased to offer an Interim Ministry Training Seminar. It is a three-phase training program. Phase I and Phase II will be held at Mount Sequoyah Conference and Retreat Center. Phase II is a five-month period of work in one's home parish under a Mentor's guidance. Dr. Jan Hill, Coordinator for Intentional Interim Ministry Training at the Intentional Growth Center, will be conducting the training. Reservations for meals and lodging are additional and made directly with Mount Sequoyah.

Phase I of the seminar will be held at Mount Sequoyah Tuesday, Sept 30 – Friday, October 4, 2008. For more information and registration materials, please contact Dr. Jan Hill at the Intentional Growth Center at 800-482-1442 Extension 723, janhill@intentionalgrowthcenter.org. Reservations for meals and lodging are made directly with Mount Sequoyah. Forms are available at www.mountsequoyah.org or by contacting Marilyn at 800-760-8126, programs@mountsequoyah.org.